

**Gold Coast Mental Health Forum**  
**Sunday, 13th March 2005**  
**Bond University - Cerum Theatre**

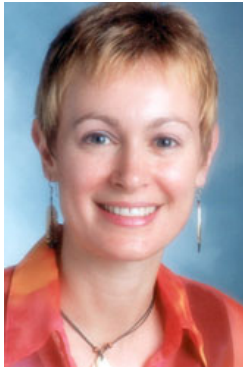
## Keynote Speakers

**Professor Harvey Whiteford, University of Queensland**  
**Subject: Depression**



Dr Whiteford is the Kratzmann Professor of Psychiatry and Population Mental Health at the University of Queensland, Australia. He has held senior clinical and administrative positions, including those of Director of Mental Health in the Queensland and the Federal governments. He was the first person appointed to work for the World Bank in the area of mental health. His expertise and research interests are in mental health policy, financing and service delivery in developed and developing countries.

**Dr Jan Nicholson, Queensland University of Technology**  
**Subject: Mental Health Relating to Children**



Senior Research Fellow, Centre for Public Health Research – Public Health

*Ph.D. in Psychology, Department of Psychiatry, University of Queensland, M.Sc. (Awarded with Distinction), Department of Psychology, University of Canterbury, New Zealand, B.Sc. Hons. Department of Psychology, Victoria University of Wellington, New Zealand, B.Sc., Department of Psychology, University of Otago, New Zealand*

Dr Jan Nicholson is a Senior Research Fellow in the Centre for Health Research, School of Public Health at Queensland University of Technology. Jan's research interests involve studying the effects of family, socioeconomic and school influences on the health and wellbeing of young people, and the development and evaluation of community-based programs for preventing children's mental health problems.

**Professor Ross Young, Queensland University of Technology**  
[http://www.hlth.qut.edu.au/psyc/research/research\\_pubs.jsp](http://www.hlth.qut.edu.au/psyc/research/research_pubs.jsp)  
**Subject: Schizophrenia**



**Professor Ross Young** is the Head of School, School of Psychology and Counselling, Queensland University of Technology and an Honorary Professor in the School of Medicine at the University of Queensland. His research interests lie in the psychosocial and biological factors which contribute to psychological problems and psychiatric illness, in prevention science and in developing effective mental health interventions. He has served on both State and National bodies related to drug and alcohol issues, and maintains a part-time clinical practice at the Alcohol and Drug Unit at the Princess Alexandra Hospital.

**Craig Thompson, Retired Magistrate**  
**Subject: "Involuntary" Mental Health**



Mr Thompson is a non-practicing Barrister at Law and has twenty-three years experience as a magistrate in Local Courts of NSW, has four years experience in the Children's Court and served briefly in the Coroner's Court. Mr Thompson is a former District Governor in Lions Clubs International. He was the liaison officer for Lions in the former Lions AFADD Foundation, the District Drug Awareness Chairman for three years and President of PRYDE (Parents Reaching Youth through Drug Education). Mr Thompson was a board member of the Ted Noffs Foundation for seven years.

**Emeritus Prof Ian Webster AO, University of NSW**  
**Subject: Youth Suicide and related issues**



Professor Webster is Emeritus Professor of The University of New South Wales. He is Chair of the National Advisory Council on Suicide Prevention, Chair of the New South Wales Expert Advisory Committee on Drugs, Chair of the Alcohol Education and Rehabilitation Foundation, Co-chair, New South Wales Mental Health Implementation Group, Director of the Board of the South Western Sydney Area Health Service and Chair, Centres for Primary Health Care and Equity, University of New South Wales. He is honorary visiting physician to the Matthew Talbot Hostel for the homeless and physician in Drug and Alcohol in the South Western Sydney Area Health Service. He is President of the International Federation of Non-Government Organisations against drug abuse.

Professor Webster will team up with Rotary District Governor Elect **Noel Trevaskis**, who can relate to Depression from personal experience.

**Dr Philip Morris, Executive Director, Gold Coast Institute of Mental Health**  
**Subject: Bi-Polar Disorder**



Dr Morris has the medical qualifications of MBBS (Hons), BSc(med) (Hons), and PhD. He is qualified in psychiatry and addiction medicine in Australia and holds the FRANZCP and the FACHAM. He is qualified in general adult psychiatry and geriatric psychiatry in the USA and is Board Certified by the American Board of Psychiatry and Neurology. Dr Morris has held professor of psychiatry positions at the University of Melbourne and the University of Queensland and was adjunct professor of Health Sciences at Bond University. At the University of Melbourne he was the chairman of the Department of

Psychiatry Research Committee. Currently Dr Morris is Director of Medical Services (part-time), Macquarie Hospital, Sydney, and Medical Director (part-time), Mirikai Drug Rehabilitation Unit, Gold Coast. He has a private psychiatric practice on the Gold Coast. He is a member of the Repatriation Pharmaceutical Reference Committee, the Queensland Compensation (Q-Comp) Medical Assessment Tribunal, and the RANZCP Continuing Professional Development Committee. He has been Director of Mental Health and Director of Psychiatry at the Gold Coast District Health Service and Director of the National Centre for War-related Post Traumatic Stress Disorder. His clinical and research interests include neuropsychiatry/psycho geriatrics, post-trauma syndromes, clinical drug trials and dual diagnosis conditions. Since returning to Australia from post-graduate research and clinical training in the USA in 1993 he has published a significant number of articles and reports and gained approximately one million dollars in competitive research grants and pharmaceutical industry support. Dr Morris has conducted independent investigator and pharmaceutical industry sponsored clinical drug trials in Australia. He is an external assessor for the Therapeutic Goods Administration.